

V164A Technical Data Sheet

		CONTROL SYSTEM	SELF EXCITED
INSULATION SYSTEM	CLASS H	A.V.R.	AS440
PROTECTION	IP23	VOLTAGE REGULATION	±1.0 %
WINDING PITCH	2/3	SUSTAINED SHORT CIRCUIT	NOT
WINDING LEADS	12	WAVEFORM DISTORTION	NO LOAD < 1.5% NON-DISTORTING BALANCED LINEAR LOAD < 5.0%
MAXIMUM / OVERSPEED	2250 Rev/Min	TELEPHONE INTERFERENCE: THF	THF<2%
		TELEPHONE INTERFERENCE: TIF	TIF<50

50Hz CLASS "H"

RATINGS		Winding 311 / 0.8 Power Factor							Winding 05	
Duty/Ambient T°. RISE		Cont.125K/40°C				Cont.125K/40°C			Cont.125K/40°C	
PHASE		3 PHASE				1 PHASE			1 PHASE	
SERIES STAR		380	400	415	440				Power Factor	
PARALLEL STAR		190	200	208	220				0.8	1
SERIES DELTA		220	230	240	254					
DOUBLE DELTA						220	230	240	220, 230, 240	
SLG164A	KVA	8.1	8.1	8.1	6.2	4.7	4.7	4.7	5.4	6.8
	KW	6.5	6.5	6.5	5	3.8	3.8	3.8	4.3	6.8

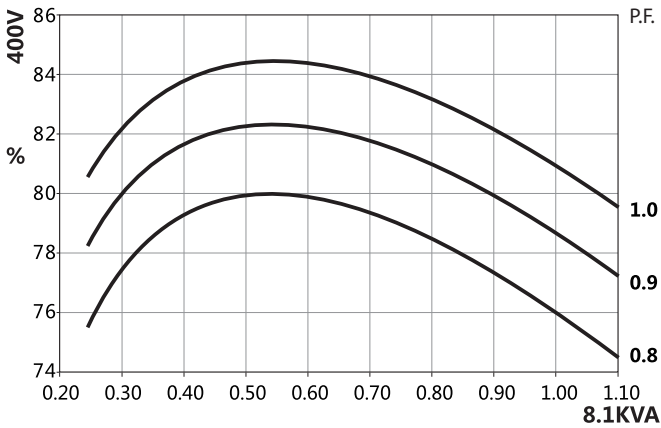
60Hz CLASS "H"

RATINGS		Winding 311 / 0.8 Power Factor							Winding 06	
Duty/Ambient T°. RISE		Cont.125K/40°C				Cont.125K/40°C			Cont.125K/40°C	
PHASE		3 PHASE				1 PHASE			1 PHASE	
SERIES STAR		416	440	460	480				Power Factor	
PARALLEL STAR		208	220	230	240				0.8	1
SERIES DELTA		240	254	266	277					
DOUBLE DELTA						220	230	240	220, 230, 240	
SLG164A	KVA	9.6	10.2	10.2	10.2	5.1	5.4	5.6	6.4	8.2
	KW	7.7	8.2	8.2	8.2	4.1	4.3	4.5	5.1	8.2

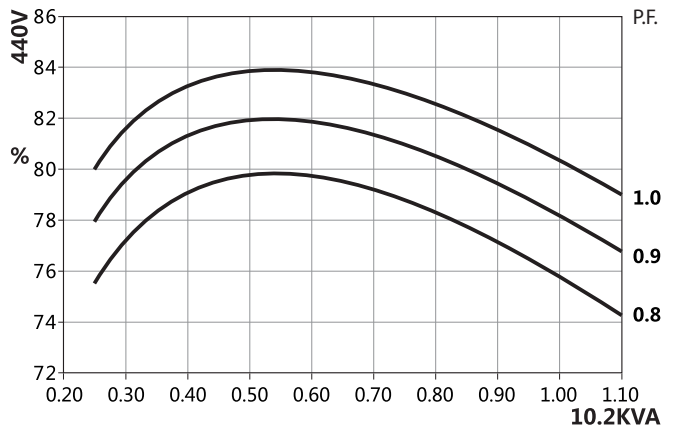
REACTANCES , TIME CONSTANTS (s) : CLASS : H / 400 V

	SLG164A	
	50Hz/400V	60Hz/440V
Xd DIR. AXIS SYNCHRONOUS	1.800	2.248
X'd DIR. AXIS TRANSIENT	0.184	0.230
X''d DIR. AXIS SUBTRANSIENT	0.115	0.144
Xq QUAD. AXIS REACTANCE	0.895	1.117
X''q QUAD. AXIS SUBTRANSIENT	0.207	0.258
XL LEAKAGE REACTANCE	0.072	0.090
X2 NEGATIVE SEQUENCE	0.172	0.215
X0 ZERO SEQUENCE	0.078	0.098
T'd TRANSIENT TIME CONST. (s)	0.012	
T''d SUB-TRANSTIME CONST. (s)	0.003	
T'do O.C. FIELD TIME CONST. (s)	0.2	
Ta ARMATURE TIME CONST. (s)	0.004	
SHORT CIRCUIT RATIO	1/ Xd	

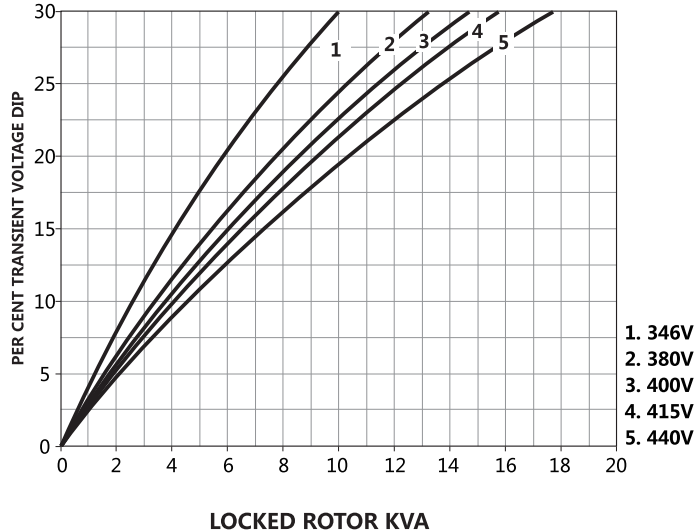
50Hz 400V Winding 311 THREE PHASE EFFICIENCY CURVES



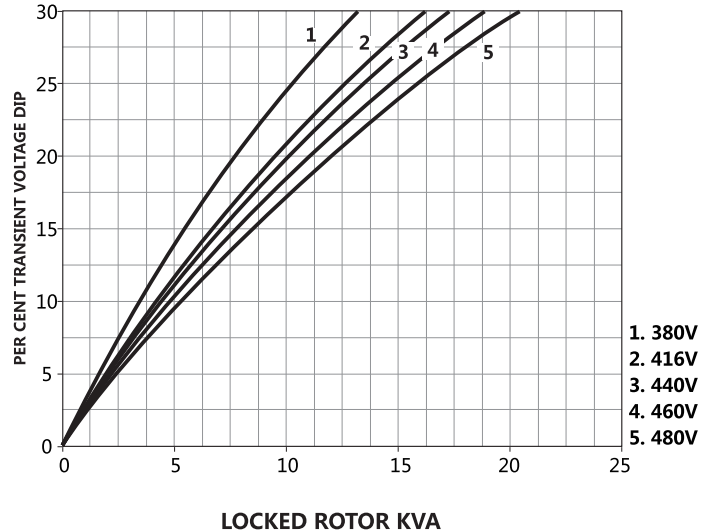
60Hz 440V Winding 311 THREE PHASE EFFICIENCY CURVES



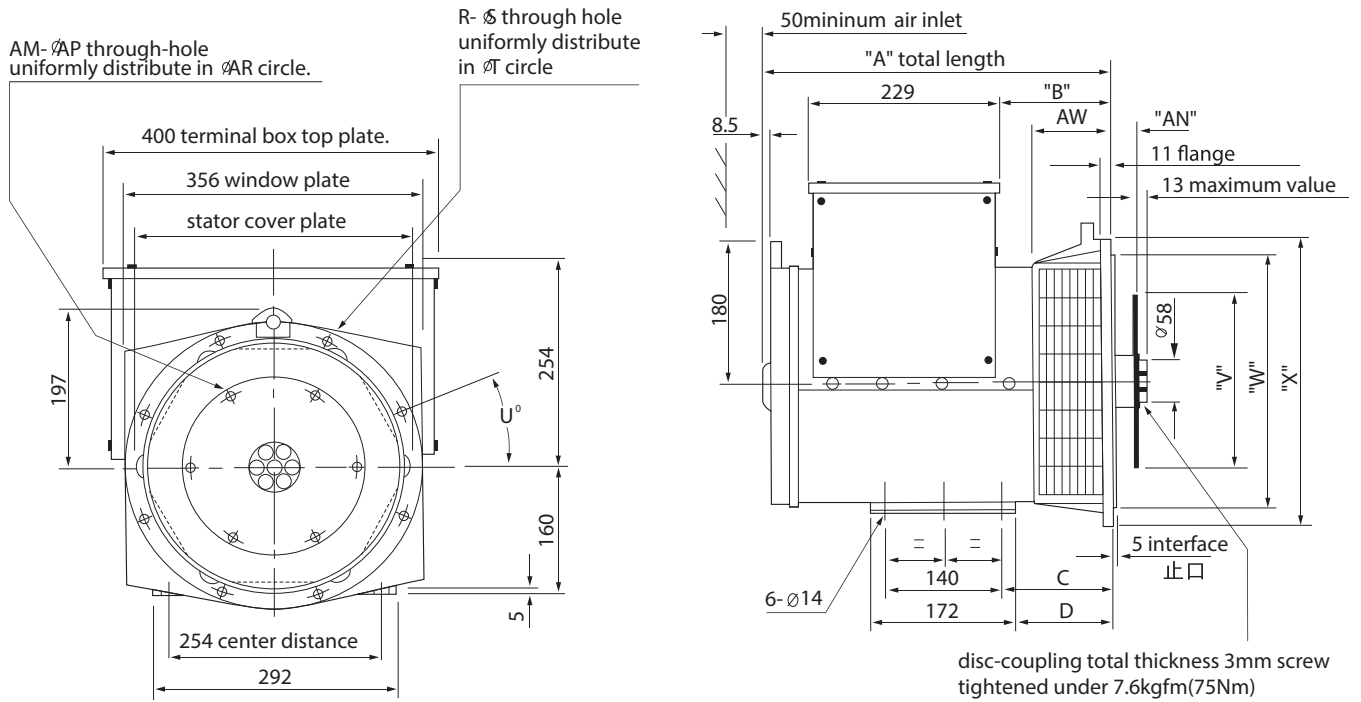
50Hz 400V Winding 311 Locked Rotor Motor Starting Curve



60Hz Winding 311 Locked Rotor Motor Starting Curve



Single bearing external dimension



DIMENSION

Model	A			B		
	SAE2	SAE3/5	SAE4	SAE2	SAE3/5	SAE4
SLG164A	416.3	403.5	391.5	146.3	119	107

FLANGE

S.A.E.NO.	AW	R	S	T	U°	W	X	C	D
3	105	8	11	428.6	15	409.5	451	145	129
4	93	8	11	381.0	15	361.9	402	133	117
5	105	8	11	333.3	22.5	314.3	356	145	129
6*	124.7	8	11	285.8	22.5	266.7	308	164.7	148.7

DISC COUPLING

S.A.E.NO.	AN	AM	AP	AR	V
6.5	30.16	6	8.7	200.0	215.8
7.5	30.16	8	8.7	222.2	241.2
8	61.9	6	11	244.5	263.4
10	53.98	8	11	295.3	314.2
11.5	39.68	8	11	333.4	352.3

SAE NO SELECTOR CHOWT

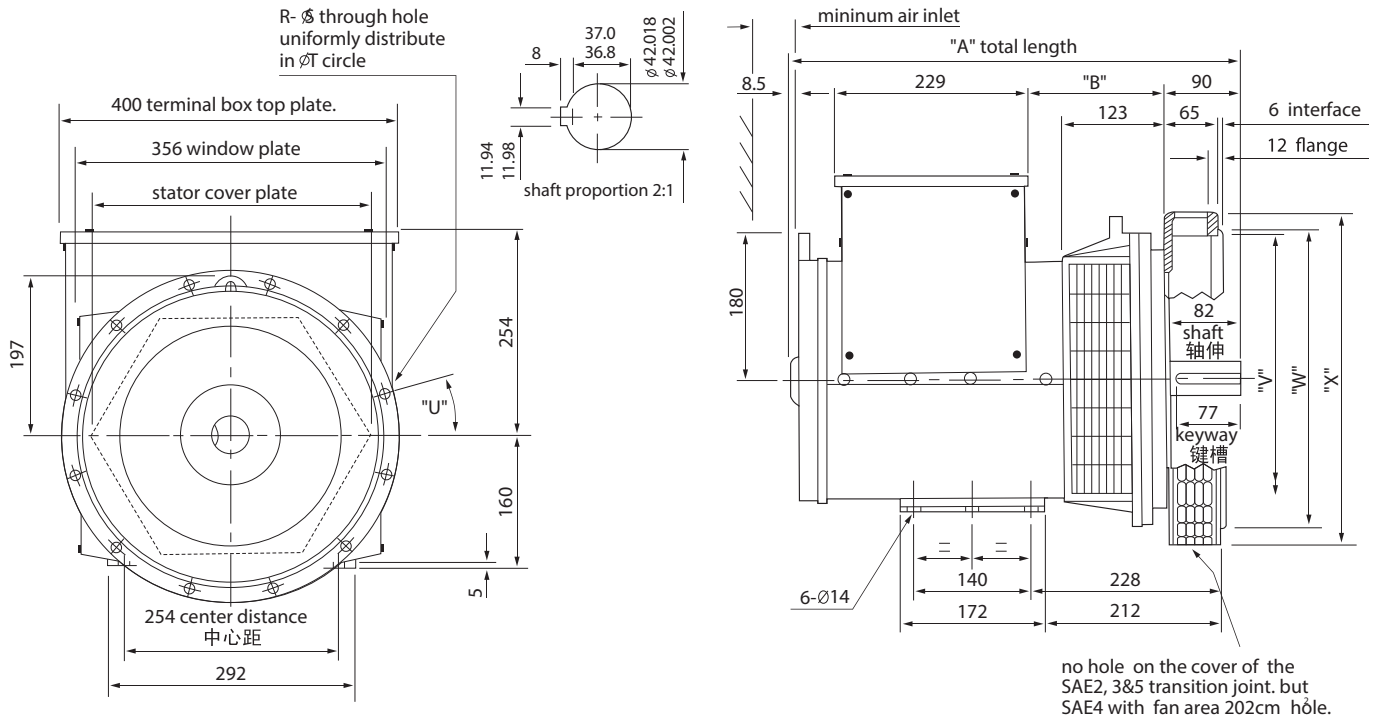
	SAE 6.5	SAE 7.5	SAE 8	SAE 10	SAE 11.5
SAE 3	•	•		•	•
SAE 4		•	•	•	
SAE 5	•	•			
SAE 6	•				

TRANSPORTATION DATA

Model	N.W(kg)	G.W(kg)	LXWXH(cm)	QTY FOR 20FT CONTAINER
SLG164A	85	95	58x56x62	90

Note:* "A" dimension should extend 31.77mm corresponding to an additional spacer plate added on SAE6.

Double bearing external dimension



DIMENSION

Model	A	B
SLG164A	511.5	137

FLANGE

S.A.E.NO.	R	S	T	U°	V	W	X
3	12	11	428.6	15	396	409.5	451
4	12	11	381.0	15	352	361.9	403
5	8	11	333.3	22.5	301	314.3	356

TRANSPORTATION DATA

Model	N.W(kg)	G.W(kg)	LXWXH(cm)	QTY FOR 20FT CONTAINER
SLG164A	91	101	64x56x62	90

ISO9001



ITALIAN
TECHNOLOGY

www.voltaggio.ae